

# Dell™ Inspiron™ 1320 Service Manual

[Before You Begin](#)

[Battery](#)

[Module Cover](#)

[Memory Module\(s\)](#)

[Wireless Mini-Card](#)

[Coin-Cell Battery](#)

[Center Control Cover](#)

[Keyboard](#)

[Hard Drive](#)

[Palm Rest](#)

[Internal Card With Bluetooth Wireless Technology](#)

[Speakers](#)

[Processor Fan](#)

[System Board](#)

[Processor Heat Sink Assembly](#)

[Processor](#)

[I/O Board](#)

[Battery Latch Assembly](#)

[Display](#)

[Camera Board](#)

[Flashing the BIOS](#)

---

## Notes, Cautions, and Warnings



**NOTE:** A NOTE indicates important information that helps you make better use of your computer.



**CAUTION:** A CAUTION indicates potential damage to hardware or loss of data if instructions are not followed.



**WARNING:** A WARNING indicates a potential for property damage, personal injury, or death.

---

Information in this document is subject to change without notice.  
© 2009 Dell Inc. All rights reserved.

Reproduction of these materials in any manner whatsoever without the written permission of Dell Inc. is strictly forbidden.

Trademarks used in this text: *Dell* and the *DELL* logo are trademarks of Dell Inc.; *Bluetooth* is a registered trademark owned by Bluetooth SIG, Inc. and is used by Dell under license; *Microsoft*, *Windows*, *Windows Vista*, and *Windows Vista* start button logo are either trademarks or registered trademarks of Microsoft Corporation in the United States and/or other countries.

Other trademarks and trade names may be used in this document to refer to either the entities claiming the marks and names or their products. Dell Inc. disclaims any proprietary interest in trademarks and trade names other than its own.

Model P04S Type: P04S001

June 2009 Rev. A00

## Battery Latch Assembly

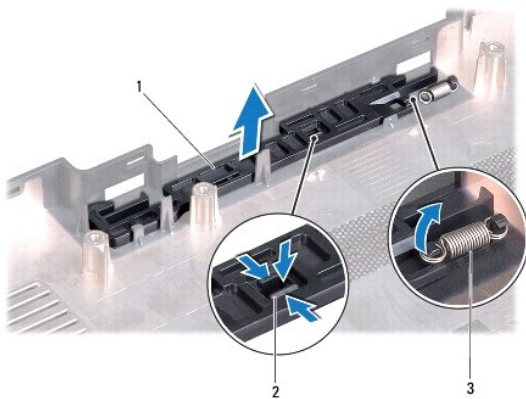
### Dell™ Inspiron™ 1320 Service Manual

- [Removing the Battery Latch Assembly](#)
- [Replacing the Battery Latch Assembly](#)

- WARNING:** Before working inside your computer, read the safety information that shipped with your computer. For additional safety best practices information, see the Regulatory Compliance Homepage at [www.dell.com/regulatory\\_compliance](http://www.dell.com/regulatory_compliance).
- CAUTION:** To avoid electrostatic discharge, ground yourself by using a wrist grounding strap or by periodically touching an unpainted metal surface (such as a connector on your computer).
- CAUTION:** Only a certified service technician should perform repairs on your computer. Damage due to servicing that is not authorized by Dell™ is not covered by your warranty.
- CAUTION:** To help prevent damage to the system board, remove the main battery (see [Removing the Battery](#)) before working inside the computer.
- 

## Removing the Battery Latch Assembly

1. Follow the instructions in [Before You Begin](#).
2. Remove the system board (see [Removing the System Board](#)).
3. Press and push the battery release latch clip to release it from the battery latch assembly.
4. Remove the spring from the hook that holds it in place.
5. Lift the battery latch assembly out of the computer base.



1	battery latch assembly	2	battery release latch clip
3	spring		

---

## Replacing the Battery Latch Assembly

1. Place the battery latch assembly in the channel in the computer base.
2. Push the battery release latch clip into the battery latch assembly.
3. Using a small screwdriver, place the spring over the hook on the computer base.  
Ensure that the newly installed latch moves smoothly and freely when pushed and released.
4. Replace the system board (see [Replacing the System Board](#)).

---

[Back to Contents Page](#)

## Battery

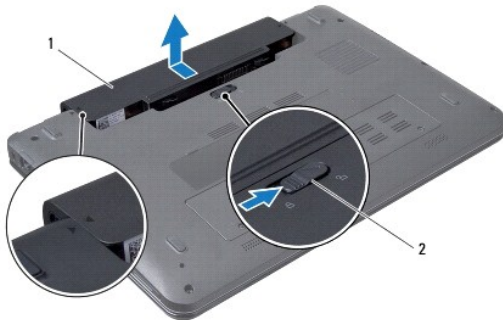
### Dell™ Inspiron™ 1320 Service Manual

- [Removing the Battery](#)
- [Replacing the Battery](#)

- WARNING:** Before working inside your computer, read the safety information that shipped with your computer. For additional safety best practices information, see the Regulatory Compliance Homepage at [www.dell.com/regulatory\\_compliance](http://www.dell.com/regulatory_compliance).
- CAUTION:** To avoid electrostatic discharge, ground yourself by using a wrist grounding strap or by periodically touching an unpainted metal surface (such as a connector on your computer).
- CAUTION:** Only a certified service technician should perform repairs on your computer. Damage due to servicing that is not authorized by Dell™ is not covered by your warranty.
- CAUTION:** To avoid damage to the computer, use only the battery designed for this particular Dell computer. Do not use batteries designed for other Dell computers.
- 

## Removing the Battery

1. Follow the procedures in [Before You Begin](#).
2. Turn the computer over.
3. Slide the battery release latch to the unlock position.
4. Slide the battery out and lift it out of the battery bay.



1	battery	2	battery release latch
---	---------	---	-----------------------

---

## Replacing the Battery

- CAUTION:** To avoid damage to the computer, use only the battery designed for this particular Dell computer.
1. Align the triangles marked on the battery and the computer base.
  2. Slide the battery into the battery bay until it clicks into place.
-

[Back to Contents Page](#)

## Before You Begin

### Dell™ Inspiron™ 1320 Service Manual

- [Recommended Tools](#)
- [Turning Off Your Computer](#)
- [Before Working Inside Your Computer](#)

This section provides procedures for removing and installing the components in your computer. Unless otherwise noted, each procedure assumes that the following conditions exist:

- 1 You have performed the steps in [Turning Off Your Computer](#) and [Before Working Inside Your Computer](#).
- 1 You have read the safety information that shipped with your computer.
- 1 A component can be replaced or—if purchased separately—installed by performing the removal procedure in reverse order.

---

## Recommended Tools



The procedures in this document may require the following tools:

- 1 Small flat screwdriver
- 1 Phillips screwdriver
- 1 Plastic scribe
- 1 Hex nut driver
- 1 BIOS upgrade CD or the BIOS executable update program available on the Dell Support website at [support.dell.com](http://support.dell.com)

---

## Turning Off Your Computer


 **CAUTION:** To avoid losing data, save and close all open files and exit all open programs before you turn off your computer.


1. Save and close all open files and exit all open programs.
2. In Microsoft® Windows Vista®, click **Start**  , click the arrow  , and then click **Shut Down**.  
  
The computer turns off after the operating system shutdown process finishes.
3. Ensure that the computer and any attached devices are turned off. If your computer and attached devices did not automatically turn off when you shut down your operating system, press and hold the power button for at least 8 to 10 seconds until the computer turns off.


---

## Before Working Inside Your Computer


Use the following safety guidelines to help protect your computer from potential damage and to help to ensure your own personal safety.


 **WARNING:** Before working inside your computer, read the safety information that shipped with your computer. For additional safety best practices information, see the Regulatory Compliance Homepage at [www.dell.com/regulatory\\_compliance](http://www.dell.com/regulatory_compliance).

 **CAUTION:** To avoid electrostatic discharge, ground yourself by using a wrist grounding strap or by periodically touching an unpainted metal surface (such as a connector on your computer).

 **CAUTION:** Handle components and cards with care. Do not touch the components or contacts on a card. Hold a card by its edges or by its metal mounting bracket. Hold a component such as a processor by its edges, not by its pins.

 **CAUTION:** Only a certified service technician should perform repairs on your computer. Damage due to servicing that is not authorized by Dell™ is not covered by your warranty.


 **CAUTION:** When you disconnect a cable, pull on its connector or on its pull-tab, not on the cable itself. Some cables have connectors with locking tabs; if you are disconnecting this type of cable, press in on the locking tabs before you disconnect the cable. As you pull connectors apart, keep them evenly aligned to avoid bending any connector pins. Also, before you connect a cable, ensure that both connectors are correctly oriented and aligned.

 **CAUTION:** To avoid damaging the computer, perform the following steps before you begin working inside the computer.

1. Ensure that the work surface is flat and clean to prevent the computer cover from being scratched.
2. Turn off your computer (see [Turning Off Your Computer](#)).
3. If the computer is connected to a docking device (docked), undock it. See the documentation that came with your docking device for instructions.

 **CAUTION:** To disconnect a network cable, first unplug the cable from your computer and then unplug the cable from the network device.

4. Disconnect all telephone or network cables from the computer.
5. Press and eject any installed cards from the ExpressCard slot or the 5-in-1 Media Card Reader.
6. Disconnect your computer and all attached devices from their electrical outlets.

 **CAUTION:** To help prevent damage to the system board, remove the main battery (see [Removing the Battery](#)) before working inside the computer.

7. Remove the battery (see [Removing the Battery](#)).
8. Turn the computer top-side up, open the display, and press the power button to ground the system board.

---

[Back to Contents Page](#)

## Flashing the BIOS

### Dell™ Inspiron™ 1320 Service Manual


- [Flashing the BIOS From a CD](#)
- [Flashing the BIOS From the Hard Drive](#)

If a BIOS-update program CD is provided with the new system board, flash the BIOS from the CD. If you do not have a BIOS-update program CD, flash the BIOS from the hard drive.

---

### Flashing the BIOS From a CD


1. Ensure that the AC adapter is plugged in and that the main battery is installed properly.

 **NOTE:** If you use a BIOS-update program CD to flash the BIOS, set up the computer to boot from a CD before inserting the CD.

2. Insert the BIOS-update program CD, and restart the computer. Follow the procedures that appear on the screen. The computer continues to boot and updates the new BIOS. When the flash update is complete, the computer will automatically restart.
  3. Press <F2> during POST to enter the system setup program.
  4. Press <F9> to reset the computer defaults.
  5. Press <Esc>, select **Save changes and reboot**, and press <Enter> to save configuration changes.
  6. Remove the BIOS-update program CD from the drive and restart the computer.
- 

### Flashing the BIOS From the Hard Drive

1. Ensure that the AC adapter is plugged in, the main battery is properly installed, and a network cable is attached.
2. Turn on the computer.
3. Locate the latest BIOS update file for your computer at [support.dell.com](http://support.dell.com).
4. Click **Drivers & Downloads**→ **Select Model**.
5. Select the type of product in the **Select Your Product Family** list.
6. Select the product brand in the **Select Your Product Line** list.
7. Select the product model number in the **Select Your Product Model** list.

 **NOTE:** If you have selected a different model and want to start over again, click Start Over on the top right of the menu.

8. Click **Confirm**.
  9. A list of results appear on the screen. Click **BIOS**.
  10. Click **Download Now** to download the latest BIOS file. The **File Download** window appears.
  11. Click **Save** to save the file on your desktop. The file downloads to your desktop.
  12. Click **Close** if the **Download Complete** window appears. The file icon appears on your desktop and is titled the same as the downloaded BIOS update file.
  13. Double-click the file icon on the desktop and follow the procedures on the screen.
-





## Internal Card With Bluetooth Wireless Technology

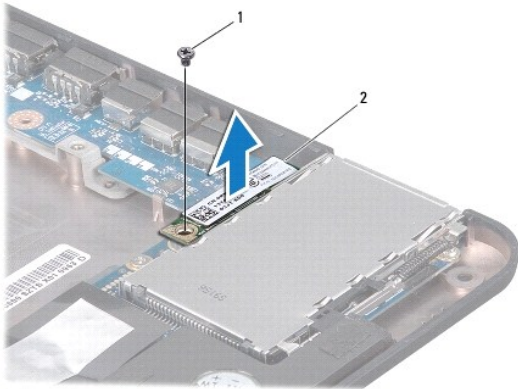
### Dell™ Inspiron™ 1320 Service Manual

- [Removing the Bluetooth Card](#)
- [Replacing the Bluetooth Card](#)

- ⚠ WARNING:** Before working inside your computer, read the safety information that shipped with your computer. For additional safety best practices information, see the Regulatory Compliance Homepage at [www.dell.com/regulatory\\_compliance](http://www.dell.com/regulatory_compliance).
- ⚠ CAUTION:** To avoid electrostatic discharge, ground yourself by using a wrist grounding strap or by periodically touching an unpainted metal surface (such as a connector on your computer).
- ⚠ CAUTION:** Only a certified service technician should perform repairs on your computer. Damage due to servicing that is not authorized by Dell™ is not covered by your warranty.
- ⚠ CAUTION:** To help prevent damage to the system board, remove the main battery (see [Removing the Battery](#)) before working inside the computer.
- 

## Removing the Bluetooth Card

1. Follow the procedures in [Before You Begin](#).
2. Remove the battery (see [Removing the Battery](#)).
3. Remove the center control cover (see [Removing the Center Control Cover](#)).
4. Remove the keyboard (see [Removing the Keyboard](#)).
5. Remove the hard drive (see [Removing the Hard Drive](#)).
6. Remove the palm rest (see [Removing the Palm Rest](#)).



1	screw	2	Bluetooth® card
---	-------	---	-----------------

7. Remove the screw that secures the Bluetooth card to the system board.
  8. Lift the Bluetooth card to disconnect it from the system board connector.
- 

## Replacing the Bluetooth Card

1. Follow the procedures in [Before You Begin](#).
2. Align the connector on the Bluetooth card with the connector on the system board and press gently.

3. Replace the screw that secures the Bluetooth card to the system board.
  4. Replace the palm rest (see [Replacing the Palm Rest](#)).
  5. Replace the hard drive (see [Replacing the Hard Drive](#)).
  6. Replace the keyboard (see [Removing the Keyboard](#)).
  7. Replace the center control cover (see [Replacing the Center Control Cover](#)).
  8. Replace the battery (see [Replacing the Battery](#)).
- 

[Back to Contents Page](#)

## Camera Board

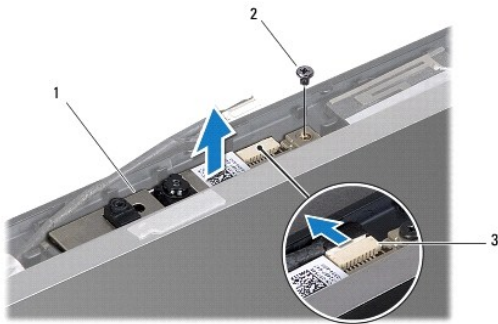
### Dell™ Inspiron™ 1320 Service Manual

- [Removing the Camera Board](#)
- [Replacing the Camera Board](#)

- WARNING:** Before working inside your computer, read the safety information that shipped with your computer. For additional safety best practices information, see the Regulatory Compliance Homepage at [www.dell.com/regulatory\\_compliance](http://www.dell.com/regulatory_compliance).
- CAUTION:** To avoid electrostatic discharge, ground yourself by using a wrist grounding strap or by periodically touching an unpainted metal surface (such as a connector on your computer).
- CAUTION:** Only a certified service technician should perform repairs on your computer. Damage due to servicing that is not authorized by Dell™ is not covered by your warranty.
- CAUTION:** To help prevent damage to the system board, remove the main battery (see [Removing the Battery](#)) before working inside the computer.
- 

## Removing the Camera Board

1. Follow the instructions in [Before You Begin](#).
2. Remove the battery (see [Removing the Battery](#)).
3. Remove the center control cover (see [Removing the Center Control Cover](#)).
4. Remove the keyboard (see [Removing the Keyboard](#)).
5. Remove the hard drive (see [Removing the Hard Drive](#)).
6. Remove the palm rest (see [Removing the Palm Rest](#)).
7. Remove the display assembly (see [Removing the Display Assembly](#)).
8. Remove the display bezel (see [Removing the Display Bezel](#)).
9. Disconnect the camera cable from the connector on the camera board.
10. Remove the screw that secures the camera board to the display cover.



1	camera board	2	screw
3	camera cable connector		

11. Remove the camera board off the display cover.
- 

## Replacing the Camera Board

1. Align the camera board over the screw hole.

2. Replace the screw that secure the camera board to the display cover.
  3. Connect the camera cable to the connector on the camera board.
  4. Replace the display bezel (see [Replacing the Display Bezel](#)).
  5. Replace the display assembly (see [Replacing the Display Assembly](#)).
  6. Replace the palm rest (see [Replacing the Palm Rest](#)).
  7. Replace the hard drive (see [Replacing the Hard Drive](#)).
  8. Replace the keyboard (see [Replacing the Keyboard](#)).
  9. Replace the center control cover (see [Replacing the Center Control Cover](#)).
  10. Replace the battery (see [Replacing the Battery](#)).
- 

[Back to Contents Page](#)

[Back to Contents Page](#)

## Coin-Cell Battery

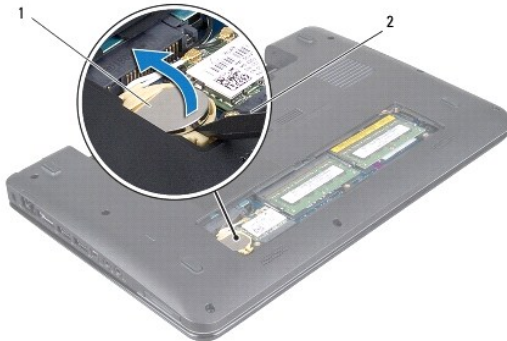
Dell™ Inspiron™ 1320 Service Manual

- [Removing the Coin-Cell Battery](#)
- [Replacing the Coin-Cell Battery](#)

- WARNING:** Before working inside your computer, read the safety information that shipped with your computer. For additional safety best practices information, see the Regulatory Compliance Homepage at [www.dell.com/regulatory\\_compliance](http://www.dell.com/regulatory_compliance).
- CAUTION:** To avoid electrostatic discharge, ground yourself by using a wrist grounding strap or by periodically touching an unpainted metal surface (such as a connector on your computer).
- CAUTION:** Only a certified service technician should perform repairs on your computer. Damage due to servicing that is not authorized by Dell™ is not covered by your warranty.
- CAUTION:** To help prevent damage to the system board, remove the main battery (see [Removing the Battery](#)) before working inside the computer.
- 

### Removing the Coin-Cell Battery

1. Follow the procedures in [Before You Begin](#).
2. Remove the battery (see [Removing the Battery](#)).
3. Remove the module cover (see [Removing the Module Cover](#)).
4. Use a plastic scribe and gently pry the coin-cell battery.



1	coin-cell battery	2	plastic scribe
---	-------------------	---	----------------

---

### Replacing the Coin-Cell Battery

1. Place the coin-cell battery with the positive (+) side facing upwards.
  2. Slide the coin-cell battery into the slot and gently press until it snaps into place.
  3. Replace the module cover (see [Replacing the Module Cover](#)).
  4. Replace the battery (see [Replacing the Battery](#)).
- 

[Back to Contents Page](#)

## Processor

### Dell™ Inspiron™ 1320 Service Manual

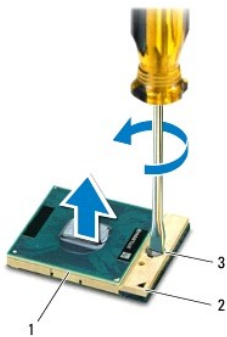
- [Removing the Processor](#)
- [Replacing the Processor](#)

- WARNING:** Before working inside your computer, read the safety information that shipped with your computer. For additional safety best practices information, see the Regulatory Compliance Homepage at [www.dell.com/regulatory\\_compliance](http://www.dell.com/regulatory_compliance).
- CAUTION:** To avoid electrostatic discharge, ground yourself by using a wrist grounding strap or by periodically touching an unpainted metal surface (such as a connector on your computer).
- CAUTION:** Only a certified service technician should perform repairs on your computer. Damage due to servicing that is not authorized by Dell™ is not covered by your warranty.
- CAUTION:** To help prevent damage to the system board, remove the main battery (see [Removing the Battery](#)) before working inside the computer.
- CAUTION:** To prevent intermittent contact between the ZIF-socket cam screw and the processor when removing or replacing the processor, press to apply slight pressure to the center of the processor while turning the cam screw.
- CAUTION:** To avoid damage to the processor, hold the screwdriver such that it is perpendicular to the processor when turning the cam screw.

## Removing the Processor

1. Follow the instructions in [Before You Begin](#).
2. Remove the processor heat sink assembly (see [Removing the Processor Heat Sink Assembly](#)).

- CAUTION:** When removing the processor, pull it straight up. Be careful not to bend the pins on the processor.
- CAUTION:** To prevent intermittent contact between the ZIF-socket cam screw and the processor when removing or replacing the processor, press to apply slight pressure to the center of the processor while turning the cam screw.
3. To loosen the ZIF socket, use a small, flat-blade screwdriver and rotate the ZIF-socket cam screw counterclockwise until it comes to the cam stop.




1	processor	2	ZIF socket
3	ZIF-socket cam screw		


- CAUTION:** To ensure maximum cooling for the processor, do not touch the heat transfer areas on the processor thermal-cooling assembly. The oils in your skin can reduce the heat transfer capability of the thermal pads.
- CAUTION:** When removing the processor module, pull the module straight up. Be careful not to bend the pins on the processor module.

4. Lift the processor module from the ZIF socket.
- 


## Replacing the Processor

 **NOTE:** If a new processor is installed, you will receive a new thermal-cooling assembly, which will include an affixed thermal pad, or you will receive a new thermal pad along with documentation to illustrate proper installation.


1. Follow the procedures in [Before You Begin](#).
2. Align the pin-1 corner of the processor module with the pin-1 corner of the ZIF socket, then insert the processor module.

 **NOTE:** The pin-1 corner of the processor module has a triangle that aligns with the triangle on the pin-1 corner of the ZIF socket.

When the processor module is properly seated, all four corners are aligned at the same height. If one or more corners of the module are higher than the others, the module is not seated properly.

 **CAUTION:** To avoid damage to the processor, hold the screwdriver perpendicular to the processor when turning the cam screw.

3. Tighten the ZIF socket by turning the cam screw clockwise to secure the processor module to the system board.
4. Replace the processor heat sink assembly (see [Replacing the Processor Heat Sink Assembly](#)).

 **CAUTION:** Before turning on the computer, replace all screws and ensure that no stray screws remain inside the computer. Failure to do so may result in damage to the computer.

---

[Back to Contents Page](#)

## Processor Heat Sink Assembly

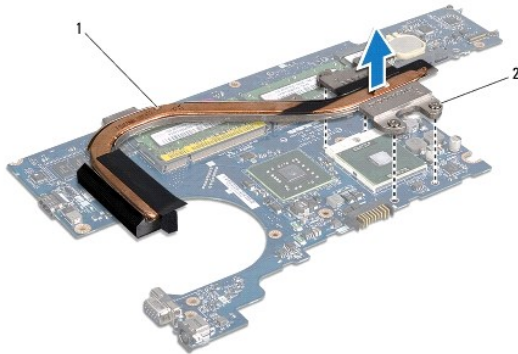
Dell™ Inspiron™ 1320 Service Manual

- [Removing the Processor Heat Sink Assembly](#)
- [Replacing the Processor Heat Sink Assembly](#)

- ⚠ **WARNING:** Before working inside your computer, read the safety information that shipped with your computer. For additional safety best practices information, see the Regulatory Compliance Homepage at [www.dell.com/regulatory\\_compliance](http://www.dell.com/regulatory_compliance).
- ⚠ **WARNING:** If you remove the processor heat sink assembly from the computer when the heat sink is hot, do not touch the metal housing of the heat sink.
- ⚠ **CAUTION:** To avoid electrostatic discharge, ground yourself by using a wrist grounding strap or by periodically touching an unpainted metal surface (such as a connector on your computer).
- ⚠ **CAUTION:** Only a certified service technician should perform repairs on your computer. Damage due to servicing that is not authorized by Dell™ is not covered by your warranty.
- ⚠ **CAUTION:** To help prevent damage to the system board, remove the main battery (see [Removing the Battery](#)) before working inside the computer.

### Removing the Processor Heat Sink Assembly

1. Follow the instructions in [Before You Begin](#).
2. Follow the procedures from [step 2](#) to [step 18](#) in [Removing the System Board](#).
3. In sequential order (indicated on the processor heat sink), loosen the four captive screws that secure the processor heat sink assembly to the system board.



1	processor heat sink assembly	2	captive screws (4)
---	------------------------------	---	--------------------

4. Lift the processor heat sink assembly off the system board.

### Replacing the Processor Heat Sink Assembly

- 🔧 **NOTE:** This procedure assumes that you have already removed the processor heat sink assembly and are ready to replace it.
- 🔧 **NOTE:** The original thermal pad can be reused if the original processor and heat sink are reinstalled together. If either the processor or heat sink is replaced, use the thermal pad provided in the kit to ensure that thermal conductivity is achieved.
- 🔧 **NOTE:** This procedure assumes that you have already removed the processor heat sink assembly and are ready to replace it.

1. Place the processor heat sink assembly on the system board.
2. Align the four captive screws on the processor heat sink assembly with the screw holes on the system board and tighten the screws in ascending order.
3. Follow the procedures from [step 3](#) to [step 17](#) in [Replacing the System Board](#).



---





[Back to Contents Page](#)

[Back to Contents Page](#)

## Display

### Dell™ Inspiron™ 1320 Service Manual

- [Display Assembly](#)
- [Hinge Caps](#)
- [Display Bezel](#)
- [Display Panel](#)
- [Display Panel Bracket](#)

-  **WARNING:** Before working inside your computer, read the safety information that shipped with your computer. For additional safety best practices information, see the Regulatory Compliance Homepage at [www.dell.com/regulatory\\_compliance](http://www.dell.com/regulatory_compliance).
-  **CAUTION:** To avoid electrostatic discharge, ground yourself by using a wrist grounding strap or by periodically touching an unpainted metal surface (such as a connector on your computer).
-  **CAUTION:** Only a certified service technician should perform repairs on your computer. Damage due to servicing that is not authorized by Dell™ is not covered by your warranty.
-  **CAUTION:** To help prevent damage to the system board, remove the main battery (see [Removing the Battery](#)) before working inside the computer.
- 

## Display Assembly

### Removing the Display Assembly

1. Follow the instructions in [Before You Begin](#).
2. Remove the battery (see [Removing the Battery](#)).
3. Remove the module cover (see [Removing the Module Cover](#)).
4. Disconnect the antenna cables from the Mini-Card.
5. Remove the center control cover (see [Removing the Center Control Cover](#)).
6. Remove the keyboard (see [Removing the Keyboard](#)).
7. Remove the hard drive (see [Removing the Hard Drive](#)).
8. Remove the palm rest (see [Removing the Palm Rest](#)).
9. Disconnect the display cable and the camera cable from their respective system board connectors.
10. Remove the six screws (three on each side) that secure the display assembly to the computer base.



1	screws (6)	2	display cable connector
3	camera cable connector		

11. Make note of the cable routing and carefully dislodge the Mini-Card antenna cables from the routing guides.
12. Lift the display assembly off the computer.

## Replacing the Display Assembly

1. Place the display assembly in position and replace the six screws (three on each side) of the display assembly.
2. Route the Mini-Card antenna cables through the routing guides.
3. Connect the display cable and the camera cable to their respective system board connectors.
4. Replace the palm rest (see [Replacing the Palm Rest](#)).
5. Replace the hard drive (see [Replacing the Hard Drive](#)).
6. Replace the keyboard (see [Replacing the Keyboard](#)).
7. Replace the center control cover (see [Replacing the Center Control Cover](#)).
8. Connect the antenna cables to the Mini-Card.
9. Replace the module cover (see [Replacing the Module Cover](#)).
10. Replace the battery (see [Replacing the Battery](#)).

**CAUTION:** Before turning on the computer, replace all screws and ensure that no stray screws remain inside the computer. Failure to do so may result in damage to the computer.

## Hinge Caps

### Removing the Hinge Caps

1. Follow the instructions in [Before You Begin](#).

2. Remove the battery (see [Removing the Battery](#)).
3. Remove the center control cover (see [Removing the Center Control Cover](#)).
4. Remove the keyboard (see [Removing the Keyboard](#)).
5. Remove the hard drive (see [Removing the Hard Drive](#)).
6. Remove the palm rest (see [Removing the Palm Rest](#)).
7. Remove the display assembly (see [Removing the Display Assembly](#)).



1	hinge caps (2)
---	----------------

8. Press the hinge caps and pull them out.

## Replacing the Hinge Caps

1. Place the hinge caps in the location and push them in.
2. Replace the display assembly (see [Replacing the Display Assembly](#)).
3. Replace the palm rest (see [Replacing the Palm Rest](#)).
4. Replace the hard drive (see [Replacing the Hard Drive](#)).
5. Replace the keyboard (see [Replacing the Keyboard](#)).
6. Replace the center control cover (see [Replacing the Center Control Cover](#)).
7. Replace the battery (see [Replacing the Battery](#)).
8. Replace any cards to the ExpressCard slot.

---

## Display Bezel

### Removing the Display Bezel

**⚠ WARNING:** Before working inside your computer, read the safety information that shipped with your computer. For additional safety best practices information, see the Regulatory Compliance Homepage at [www.dell.com/regulatory\\_compliance](http://www.dell.com/regulatory_compliance).

**⚠ CAUTION:** The display bezel is extremely fragile. Be careful when removing it to prevent damaging the bezel.

1. Remove the display assembly (see [Removing the Display Assembly](#)).



1	display bezel
---	---------------

2. Remove the hinge caps (see [Removing the Hinge Caps](#)).
3. Using your fingertips, carefully pry up the inside edge of the display bezel.
4. Remove the display bezel.

## Replacing the Display Bezel

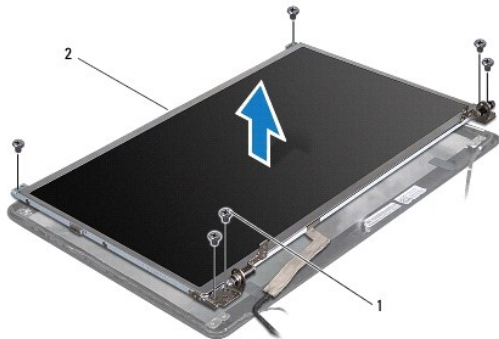
1. Realign the display bezel over the display panel, and gently snap into place.
2. Replace the hinge caps (see [Replacing the Hinge Caps](#)).
3. Replace the display assembly (see [Replacing the Display Assembly](#)).

---

## Display Panel

### Removing the Display Panel

1. Remove the display assembly (see [Removing the Display Assembly](#)).
2. Remove the display bezel (see [Removing the Display Bezel](#)).



1	screws (6)	2	display panel
---	------------	---	---------------

3. Remove the six screws that secure the display panel to the display cover.
4. Turn over the display panel and remove the conductive tape on the display board.

5. Using the display cable pull tab disconnect the display cable from the display board.
6. Lift the display panel off the display cover.

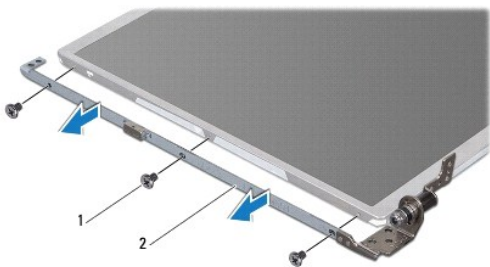
## Replacing the Display Panel

1. Connect the display panel cable to the connector on the display board and secure it with the conductive tape.
  2. Align the display panel with the display cover and replace the six screws that secure the display panel to the display cover.
  3. Replace the display bezel (see [Replacing the Display Bezel](#)).
  4. Replace the display assembly (see [Replacing the Display Assembly](#)).
- 

## Display Panel Bracket

### Removing the Display Panel Bracket

1. Remove the display assembly (see [Removing the Display Assembly](#)).
2. Remove the display bezel (see [Removing the Display Bezel](#)).
3. Remove the display panel (see [Removing the Display Panel](#)).



1	screws (6)	2	display panel brackets (2)
---	------------	---	----------------------------

4. Remove the six screws (three on each side) that secure the display panel brackets to the display panel.
5. Remove the display panel brackets off the display panel.

### Replacing the Display Panel Bracket

1. Replace the display panel brackets.
  2. Replace the six screws (three on each side) that secure the display panel brackets to the display panel.
  3. Replace the display panel (see [Replacing the Display Panel](#)).
  4. Replace the display bezel (see [Replacing the Display Bezel](#)).
  5. Replace the display assembly (see [Replacing the Display Assembly](#)).
-

## Processor Fan

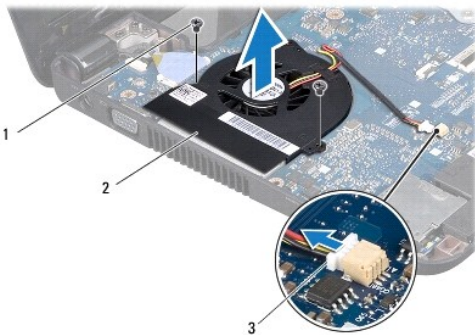
### Dell™ Inspiron™ 1320 Service Manual

- [Removing the Processor Fan](#)
- [Replacing the Processor Fan](#)

- WARNING:** Before working inside your computer, read the safety information that shipped with your computer. For additional safety best practices information, see the Regulatory Compliance Homepage at [www.dell.com/regulatory\\_compliance](http://www.dell.com/regulatory_compliance).
- CAUTION:** To avoid electrostatic discharge, ground yourself by using a wrist grounding strap or by periodically touching an unpainted metal surface (such as a connector on your computer).
- CAUTION:** Only a certified service technician should perform repairs on your computer. Damage due to servicing that is not authorized by Dell™ is not covered by your warranty.
- CAUTION:** To help prevent damage to the system board, remove the main battery (see [Removing the Battery](#)) before working inside the computer.
- 

## Removing the Processor Fan

1. Follow the instructions in [Before You Begin](#).
2. Remove the battery (see [Removing the Battery](#)).
3. Remove the center control cover (see [Removing the Center Control Cover](#)).
4. Remove the keyboard (see [Removing the Keyboard](#)).
5. Remove the hard drive (see [Removing the Hard Drive](#)).
6. Remove the palm rest (see [Removing the Palm Rest](#)).
7. Disconnect the processor fan cable from the system board connector.
8. Remove the two screws that secure the processor fan to the processor heat sink assembly.



1	screws (2)	2	processor fan
3	fan cable connector		

9. Lift the processor fan, along with the cable, off the computer.
- 

## Replacing the Processor Fan

**NOTE:** This procedure assumes that you have already removed the processor fan and are ready to replace it.

1. Place the processor fan on the processor heat sink assembly.

2. Connect the processor fan cable to the system board connector.
  3. Replace the two screws that secure the processor fan to the processor heat sink assembly.
  4. Replace the palm rest (see [Replacing the Palm Rest](#)).
  5. Replace the hard drive (see [Replacing the Hard Drive](#)).
  6. Replace the keyboard (see [Replacing the Keyboard](#)).
  7. Replace the center control cover (see [Replacing the Center Control Cover](#)).
  8. Replace the battery (see [Replacing the Battery](#)).
- 

[Back to Contents Page](#)



## Hard Drive

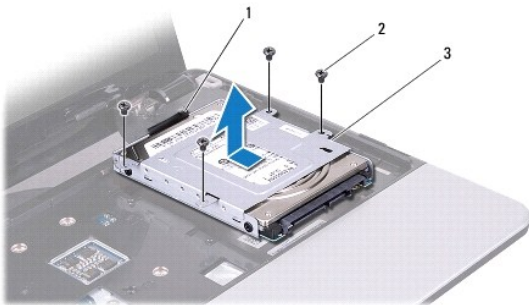
### Dell™ Inspiron™ 1320 Service Manual

- [Removing the Hard Drive](#)
- [Replacing the Hard Drive](#)

- ⚠ **WARNING:** If you remove the hard drive from the computer when the drive is hot, do not touch the metal housing of the hard drive.
- ⚠ **WARNING:** Before working inside your computer, read the safety information that shipped with your computer. For additional safety best practices information, see the Regulatory Compliance Homepage at [www.dell.com/regulatory\\_compliance](http://www.dell.com/regulatory_compliance).
- ⚠ **CAUTION:** To avoid electrostatic discharge, ground yourself by using a wrist grounding strap or by periodically touching an unpainted metal surface (such as a connector on your computer).
- ⚠ **CAUTION:** To help prevent damage to the system board, remove the main battery (see [Removing the Battery](#)) before working inside the computer.
- ⚠ **CAUTION:** To prevent data loss, turn off your computer (see [Turning Off Your Computer](#)) before removing the hard drive. Do not remove the hard drive while the computer is On or in Sleep state.
- ⚠ **CAUTION:** Hard drives are extremely fragile. Exercise care when handling the hard drive.
- ⚠ **CAUTION:** Only a certified service technician should perform repairs on your computer. Damage due to servicing that is not authorized by Dell™ is not covered by your warranty.
- ⚠ **CAUTION:** When you disconnect a cable, pull on its connector or on its pull-tab, not on the cable itself. Some cables have connectors with locking tabs; if you are disconnecting this type of cable, press in on the locking tabs before you disconnect the cable. As you pull connectors apart, keep them evenly aligned to avoid bending any connector pins. Also, before you connect a cable, ensure that both connectors are correctly oriented and aligned.
- 🔍 **NOTE:** Dell does not guarantee compatibility or provide support for hard drives from sources other than Dell.
- 🔍 **NOTE:** If you are installing a hard drive from a source other than Dell, you need to install an operating system, drivers, and utilities on the new hard drive (see the *Dell Technology Guide*).

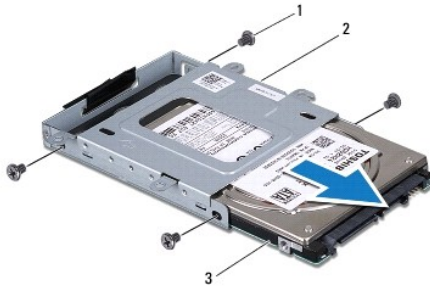
## Removing the Hard Drive

1. Follow the procedures in [Before You Begin](#).
2. Remove the battery (see [Removing the Battery](#)).
3. Remove the center control cover (see [Removing the Center Control Cover](#)).
4. Remove the keyboard (see [Removing the Keyboard](#)).
5. Remove the four screws that secure the hard drive assembly to the computer base.



1	black pull-tab	2	screws (4)
3	hard drive assembly		

6. Slide the hard drive assembly to disconnect it from the system board connector.
7. Pull the black pull-tab and lift the hard drive assembly out of the computer base.



1	screws (4)	2	hard drive cage
3	hard drive		

8. Remove the four screws that secure the hard drive to the hard drive cage.
9. Slide the hard drive out of the hard drive cage.

**CAUTION:** When the hard drive is not in the computer, store it in protective antistatic packaging (see "Protecting Against Electrostatic Discharge" in the safety instructions that shipped with your computer).

---

## Replacing the Hard Drive

1. Follow the procedures in [Before You Begin](#).
2. Remove the new drive from its packaging.  
Save the original packaging for storing or shipping the hard drive.
3. Slide the hard drive into the hard drive cage.
4. Replace the four screws that secure the hard drive to the hard drive cage.
5. Place the hard drive assembly in the computer base.
6. Slide and connect the hard drive assembly to the system board connector.
7. Replace the four screws that secure the hard drive assembly to the computer base.
8. Replace the keyboard (see [Replacing the Keyboard](#)).
9. Replace the center control cover (see [Replacing the Center Control Cover](#)).

**CAUTION:** Before turning on the computer, replace all screws and ensure that no stray screws remain inside the computer. Failure to do so may result in damage to the computer.

10. Replace the battery (see [Replacing the Battery](#)).
  11. Install the operating system for your computer, as needed (See "Restoring Your Operating System" in the *Setup Guide*).
  12. Install the drivers and utilities for your computer, as needed. For more information, see the *Dell Technology Guide*.
- 

[Back to Contents Page](#)

[Back to Contents Page](#)

## Center Control Cover

Dell™ Inspiron™ 1320 Service Manual

- [Removing the Center Control Cover](#)
- [Replacing the Center Control Cover](#)

- WARNING:** Before working inside your computer, read the safety information that shipped with your computer. For additional safety best practices information, see the Regulatory Compliance Homepage at [www.dell.com/regulatory\\_compliance](http://www.dell.com/regulatory_compliance).
- CAUTION:** To avoid electrostatic discharge, ground yourself by using a wrist grounding strap or by periodically touching an unpainted metal surface (such as a connector on your computer).
- CAUTION:** Only a certified service technician should perform repairs on your computer. Damage due to servicing that is not authorized by Dell™ is not covered by your warranty.
- CAUTION:** To help prevent damage to the system board, remove the main battery (see [Removing the Battery](#)) before working inside the computer.
- 

### Removing the Center Control Cover

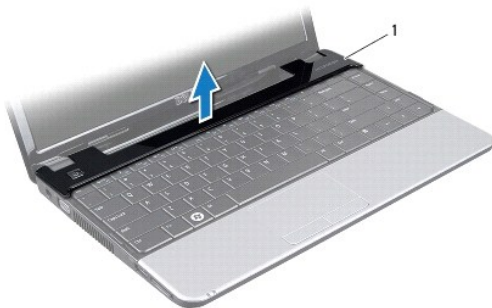
1. Follow the procedures in [Before You Begin](#).
2. Remove the battery (see [Removing the Battery](#)).
3. Remove the screw that secures the center control cover to the computer base.



4. Turn the computer over and open the display as far as possible.

**CAUTION:** Be extremely careful when removing the center control cover. The cover is very fragile.

5. Pry out the center control cover with a plastic scribe starting from the back of the computer.
6. Lift the center control cover off the computer.



1
---

center control cover
----------------------

---

## Replacing the Center Control Cover

1. Align the tabs on the center control cover and snap the cover in place.
2. Turn over the computer and replace the screw that secures the center control cover to the computer base.
3. Replace the battery (see [Replacing the Battery](#)).



**CAUTION:** Before turning on the computer, replace all screws and ensure that no stray screws remain inside the computer. Failure to do so may result in damage to the computer.

---

[Back to Contents Page](#)

[Back to Contents Page](#)

## I/O Board

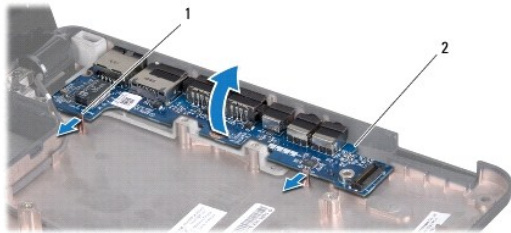
### Dell™ Inspiron™ 1320 Service Manual

- [Removing the I/O Board](#)
- [Replacing the I/O Board](#)

- WARNING:** Before working inside your computer, read the safety information that shipped with your computer. For additional safety best practices information, see the Regulatory Compliance Homepage at [www.dell.com/regulatory\\_compliance](http://www.dell.com/regulatory_compliance).
- CAUTION:** To avoid electrostatic discharge, ground yourself by using a wrist grounding strap or by periodically touching an unpainted metal surface (such as a connector on your computer).
- CAUTION:** Only a certified service technician should perform repairs on your computer. Damage due to servicing that is not authorized by Dell™ is not covered by your warranty.
- CAUTION:** To help prevent damage to the system board, remove the main battery (see [Removing the Battery](#)) before working inside the computer.
- 

## Removing the I/O Board

1. Follow the instructions in [Before You Begin](#).
2. Remove the battery (see [Removing the Battery](#)).
3. Remove the system board (see [Removing the System Board](#)).



1	latches (2)	2	I/O board
---	-------------	---	-----------

4. Pull the latches and release the I/O board from the computer base.
  5. Lift the I/O board out of the computer base as shown in the illustration.
- 

## Replacing the I/O Board

1. Align the I/O board with the notches on the computer base and gently snap until it clicks into place.
  2. Replace the system board (see [Replacing the System Board](#)).
- 

[Back to Contents Page](#)

## Keyboard

### Dell™ Inspiron™ 1320 Service Manual

- [Removing the Keyboard](#)
- [Replacing the Keyboard](#)

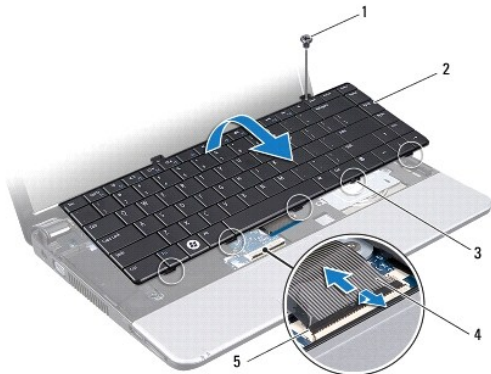
- WARNING:** Before working inside your computer, read the safety information that shipped with your computer. For additional safety best practices information, see the Regulatory Compliance Homepage at [www.dell.com/regulatory\\_compliance](http://www.dell.com/regulatory_compliance).
- CAUTION:** To avoid electrostatic discharge, ground yourself by using a wrist grounding strap or by periodically touching an unpainted metal surface (such as a connector on your computer).
- CAUTION:** Only a certified service technician should perform repairs on your computer. Damage due to servicing that is not authorized by Dell™ is not covered by your warranty.
- CAUTION:** To help prevent damage to the system board, remove the main battery (see [Removing the Battery](#)) before working inside the computer.
- 

## Removing the Keyboard

1. Follow the procedures in [Before You Begin](#).
2. Remove the battery (see [Removing the Battery](#)).
3. Remove the center control cover (see [Removing the Center Control Cover](#)).
4. Remove the screw that secures the keyboard to the computer base.

- CAUTION:** The keycaps on the keyboard are fragile, easily dislodged, and time-consuming to replace. Be careful when removing and handling the keyboard.
- CAUTION:** Be extremely careful when removing and handling the keyboard. Failure to do so could result in scratching the display panel.

5. Carefully slide the keyboard out of the computer and turn it over as indicated in the following illustration.



1	screw	2	keyboard
3	keyboard tabs (5)	4	keyboard cable
5	keyboard connector latch		

6. Release the keyboard cable connector latch and disconnect the keyboard cable from the system board connector.
  7. Lift the keyboard off the palm rest.
- 

## Replacing the Keyboard

1. Follow the procedures in [Before You Begin](#).
  2. Slide the keyboard cable into the connector on the system board and press down on the keyboard cable connector latch to secure the keyboard cable.
  3. Align the screw hole on the keyboard with the hole on the palm rest.
  4. Replace the screw that secures the keyboard to the computer base.
  5. Replace the center control cover (see [Replacing the Center Control Cover](#)).
  6. Replace the battery (see [Replacing the Battery](#)).
- 

[Back to Contents Page](#)

## Memory Module(s)

### Dell™ Inspiron™ 1320 Service Manual

- [Removing the Memory Module\(s\)](#)
- [Replacing the Memory Module\(s\)](#)

**WARNING:** Before working inside your computer, read the safety information that shipped with your computer. For additional safety best practices information, see the Regulatory Compliance Homepage at [www.dell.com/regulatory\\_compliance](http://www.dell.com/regulatory_compliance).

**CAUTION:** To avoid electrostatic discharge, ground yourself by using a wrist grounding strap or by periodically touching an unpainted metal surface (such as a connector on your computer).

**CAUTION:** Only a certified service technician should perform repairs on your computer. Damage due to servicing that is not authorized by Dell™ is not covered by your warranty.

**CAUTION:** To help prevent damage to the system board, remove the main battery (see [Removing the Battery](#)) before working inside the computer.

You can increase your computer memory by installing memory modules on the system board. See "Specifications" in your *Setup Guide* for information on the memory supported by your computer. Install only memory modules that are intended for your computer.

**NOTE:** Memory modules purchased from Dell are covered under your computer warranty.

Your computer has two user-accessible SODIMM socket that can be accessed from the bottom of the computer.

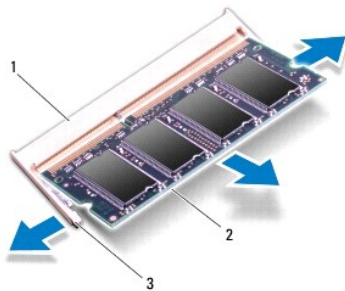
---

## Removing the Memory Module(s)

1. Follow the procedures in [Before You Begin](#).
2. Remove the battery (see [Removing the Battery](#)).
3. Remove the module cover (see [Removing the Module Cover](#)).

**CAUTION:** To prevent damage to the memory module connector, do not use tools to spread the memory module securing clips.

4. Use your fingertips to carefully spread apart the securing clips on each end of the memory module connector until the memory module pops up.
5. Remove the memory module from the memory module connector.



1	memory module connector	2	memory module
3	securing clips (2)		


---

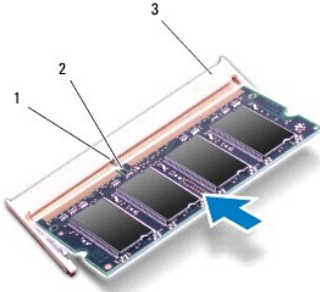
## Replacing the Memory Module(s)

1. Align the notch in the memory module with the tab in the memory module connector.




- Slide the memory module firmly into the slot at a 45-degree angle, and press the memory module down until it clicks into place. If you do not hear the click, remove the memory module and reinstall it.

 **NOTE:** If the memory module is not installed properly, the computer may not boot.



1	tab	2	notch
3	memory module connector		

 **CAUTION:** If the memory module cover is difficult to close, remove the module and reinstall it. Forcing the cover to close may damage your computer.

- Replace the module cover (see [Replacing the Module Cover](#)).
- Replace the battery (see [Replacing the Battery](#)).
- Turn on the computer.

As the computer boots, it detects the additional memory and automatically updates the system configuration information.

To confirm the amount of memory installed in the computer, click **Start**  → **Help and Support** → **Dell System Information**.

---

[Back to Contents Page](#)

## Wireless Mini-Card

### Dell™ Inspiron™ 1320 Service Manual

- [Removing the Mini-Card](#)
- [Replacing the Mini-Card](#)

**WARNING:** Before working inside your computer, read the safety information that shipped with your computer. For additional safety best practices information, see the Regulatory Compliance Homepage at [www.dell.com/regulatory\\_compliance](http://www.dell.com/regulatory_compliance).

**CAUTION:** To avoid electrostatic discharge, ground yourself by using a wrist grounding strap or by periodically touching an unpainted metal surface (such as a connector on your computer).

**CAUTION:** Only a certified service technician should perform repairs on your computer. Damage due to servicing that is not authorized by Dell™ is not covered by your warranty.

**CAUTION:** To help prevent damage to the system board, remove the main battery (see [Removing the Battery](#)) before working inside the computer.

**NOTE:** Dell does not guarantee compatibility or provide support for Mini-Cards from sources other than Dell.

If you ordered a wireless Mini-Card with your computer, the card is already installed.

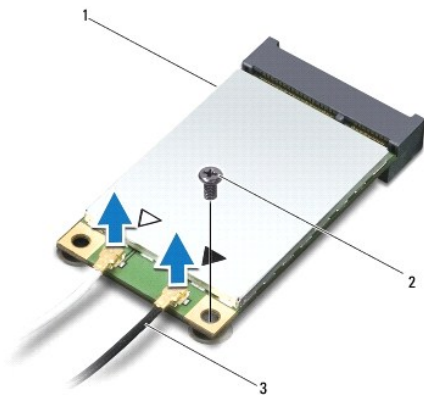
Your computer supports one Mini-Card slot:

- 1 one Half Mini-Card slot – for WLAN

**NOTE:** Depending on the configuration of the computer when it was sold, the Mini-Card slot may not have a Mini-Card installed.

## Removing the Mini-Card

1. Follow the instructions in [Before You Begin](#).
2. Remove the battery (see [Removing the Battery](#)).
3. Remove the module cover (see [Removing the Module Cover](#)).
4. Disconnect the antenna cables from the Mini-Card.



1	Mini-Card	2	screw
3	antenna cables (2)		

5. Remove the screw that secures the Mini-Card to the system board.
6. Lift the Mini-Card out of the system board connector.



**CAUTION:** When the Mini-Card is not in the computer, store it in protective antistatic packaging. For more information, see "Protecting Against Electrostatic Discharge" in the safety information that shipped with your computer.

---

## Replacing the Mini-Card

1. Remove the new Mini-Card from its packaging.

**CAUTION:** Use firm and even pressure to slide the card into place. If you use excessive force, you may damage the connector.

2. Insert the Mini-Card connector at a 45-degree angle into the system board connector.
3. Press the other end of the Mini-Card down into the slot on the system board.
4. Replace the screw that secures the Mini-Card to the system board.
5. Connect the appropriate antenna cables to the Mini-Card you are installing. The following table provides the antenna cable color scheme for each Mini-Card supported by your computer.

Connectors on the Mini-Card	Antenna Cable Color Scheme
<b>WLAN (2 antenna cables)</b>	
Main WLAN (white triangle)	white
Auxiliary WLAN (black triangle)	black

6. Replace the module cover (see [Replacing the Module Cover](#)).
7. Replace the battery (see [Replacing the Battery](#)).
8. Install the drivers and utilities for your computer, as required. For more information, see the *Dell Technology Guide*.

**NOTE:** If you are installing a communication card from a source other than Dell, you must install the appropriate drivers and utilities. For more generic driver information, see the *Dell Technology Guide*.

---

[Back to Contents Page](#)

[Back to Contents Page](#)

## Module Cover

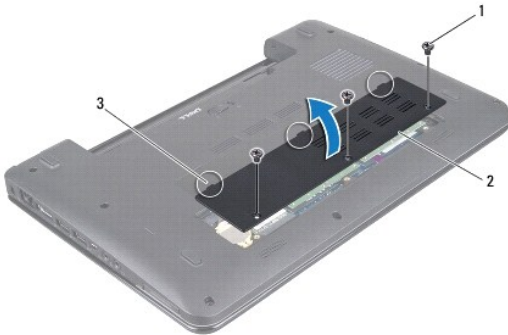
Dell™ Inspiron™ 1320 Service Manual

- [Removing the Module Cover](#)
- [Replacing the Module Cover](#)

- WARNING:** Before working inside your computer, read the safety information that shipped with your computer. For additional safety best practices information, see the Regulatory Compliance Homepage at [www.dell.com/regulatory\\_compliance](http://www.dell.com/regulatory_compliance).
- CAUTION:** To avoid electrostatic discharge, ground yourself by using a wrist grounding strap or by periodically touching an unpainted metal surface (such as a connector on your computer).
- CAUTION:** Only a certified service technician should perform repairs on your computer. Damage due to servicing that is not authorized by Dell™ is not covered by your warranty.
- CAUTION:** To help prevent damage to the system board, remove the main battery (see [Removing the Battery](#)) before working inside the computer.
- 

### Removing the Module Cover

1. Follow the procedures in [Before You Begin](#).
2. Remove the battery (see [Removing the Battery](#)).
3. Remove the three screws that secure the module cover to the computer base.
4. Remove the module cover.



1	screws (3)	2	module cover
3	module cover tabs (3)		

---

### Replacing the Module Cover

1. Align the tabs on the module cover with the computer base and place the module cover in position.
  2. Replace the three screws that secure the module cover to the computer base.
  3. Replace the battery (see [Replacing the Battery](#)).
- 

[Back to Contents Page](#)

[Back to Contents Page](#)

## Palm Rest

### Dell™ Inspiron™ 1320 Service Manual

- [Removing the Palm Rest](#)
- [Replacing the Palm Rest](#)

- ⚠ WARNING:** Before working inside your computer, read the safety information that shipped with your computer. For additional safety best practices information, see the Regulatory Compliance Homepage at [www.dell.com/regulatory\\_compliance](http://www.dell.com/regulatory_compliance).
- ⚠ CAUTION:** To avoid electrostatic discharge, ground yourself by using a wrist grounding strap or by periodically touching an unpainted metal surface (such as a connector on your computer).
- ⚠ CAUTION:** Only a certified service technician should perform repairs on your computer. Damage due to servicing that is not authorized by Dell™ is not covered by your warranty.
- ⚠ CAUTION:** To help prevent damage to the system board, remove the main battery (see [Removing the Battery](#)) before working inside the computer.
- 

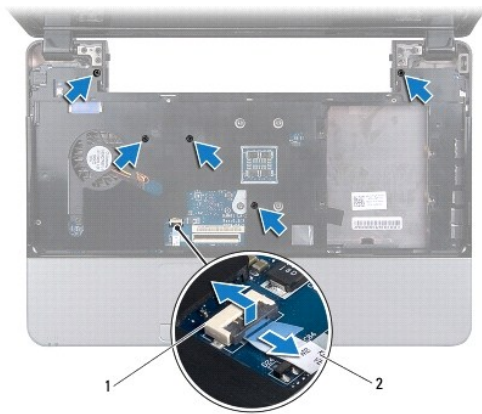
## Removing the Palm Rest

1. Follow the instructions in [Before You Begin](#).
2. Remove the battery (see [Removing the Battery](#)).
3. Remove the center control cover (see [Removing the Center Control Cover](#)).
4. Remove the keyboard (see [Removing the Keyboard](#)).
5. Remove the hard drive (see [Removing the Hard Drive](#)).

- ⚠ CAUTION:** Pull the pull-tabs on top of the connectors to avoid damage to the connectors.



6. Turn the computer over and remove the seven screws from the computer base.
7. Turn the computer top side up and remove the five screws that secure the palm rest to the computer base.

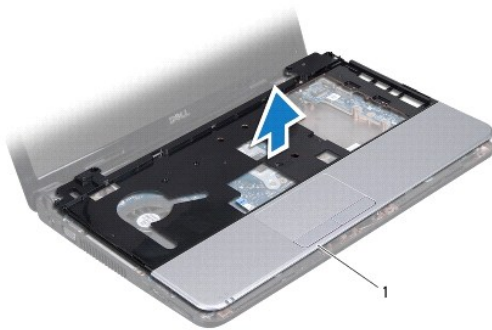


1	touchpad cable connector	2	touchpad cable
---	--------------------------	---	----------------

- Lift the locking tab and pull the pull-tab on the touch pad cable connector and disconnect the touchpad cable.

**CAUTION:** Carefully separate the palm rest from the computer base to avoid damage to the palm rest.

- Using your fingers carefully lift the palm rest along the rear edge and then ease the palm rest from the computer base.



1	palm rest
---	-----------

- Lift the palm rest off the computer base.

## Replacing the Palm Rest

- Follow the instructions in [Before You Begin](#).
- Align the palm rest with the computer base and gently snap the palm rest into place.
- Connect the touch pad cable to the touch pad cable connector on the system board.
- Press the locking tab to secure the touch pad cable.
- Replace the five screws on the top of the palm rest.
- Turn the computer over and replace the seven screws on the computer base.
- Replace the hard drive (see [Replacing the Hard Drive](#)).
- Replace the keyboard (see [Replacing the Keyboard](#)).

9. Replace the center control cover (see [Replacing the Center Control Cover](#)).

10. Replace the battery (see [Replacing the Battery](#)).

---

[Back to Contents Page](#)

## Speakers

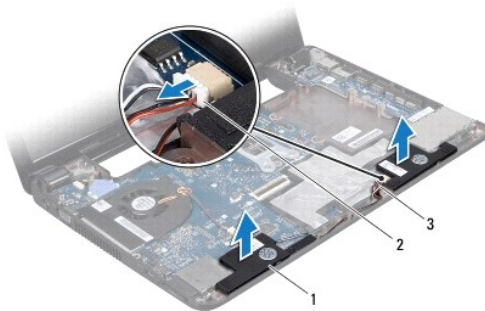
### Dell™ Inspiron™ 1320 Service Manual

- [Removing the Speakers](#)
- [Replacing the Speakers](#)

- WARNING:** Before working inside your computer, read the safety information that shipped with your computer. For additional safety best practices information, see the Regulatory Compliance Homepage at [www.dell.com/regulatory\\_compliance](http://www.dell.com/regulatory_compliance).
- CAUTION:** To avoid electrostatic discharge, ground yourself by using a wrist grounding strap or by periodically touching an unpainted metal surface (such as a connector on your computer).
- CAUTION:** Only a certified service technician should perform repairs on your computer. Damage due to servicing that is not authorized by Dell™ is not covered by your warranty.
- CAUTION:** To help prevent damage to the system board, remove the main battery (see [Removing the Battery](#)) before working inside the computer.
- 

## Removing the Speakers

1. Follow the instructions in [Before You Begin](#).
2. Remove the battery (see [Removing the Battery](#)).
3. Remove the center control cover (see [Removing the Center Control Cover](#)).
4. Remove the keyboard (see [Removing the Keyboard](#)).
5. Remove the hard drive (see [Removing the Hard Drive](#)).
6. Remove the palm rest (see [Removing the Palm Rest](#)).



1	speakers (2)	2	speaker cable connector
3	speaker cable		

7. Make note of the speaker cable routing.
  8. Disconnect the speaker cable from the speaker cable connector on the system board.
  9. Lift the speakers off the computer base.
- 

## Replacing the Speakers

1. Follow the procedures in [Before You Begin](#).
2. Place the speakers on the computer base and route the speaker cables along the routing guides.



3. Connect the speaker cable to the speaker cable connector on the system board.
  4. Replace the palm rest (see [Replacing the Palm Rest](#)).
  5. Replace the hard drive (see [Replacing the Hard Drive](#)).
  6. Replace the keyboard (see [Replacing the Keyboard](#)).
  7. Replace the center control cover (see [Replacing the Center Control Cover](#)).
  8. Replace the battery (see [Replacing the Battery](#)).
- 





[Back to Contents Page](#)

[Back to Contents Page](#)


## System Board

Dell™ Inspiron™ 1320 Service Manual

- [Removing the System Board](#)
- [Replacing the System Board](#)
- [Entering the Service Tag in the BIOS](#)

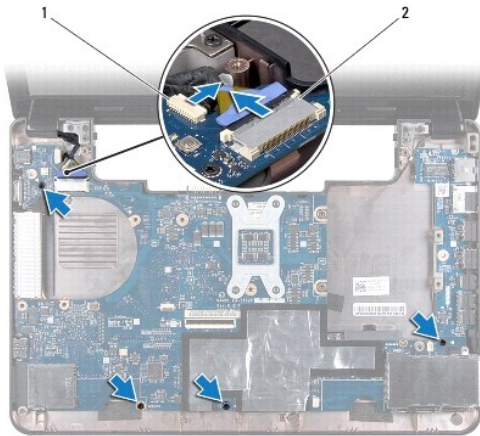
-  **WARNING:** Before working inside your computer, read the safety information that shipped with your computer. For additional safety best practices information, see the Regulatory Compliance Homepage at [www.dell.com/regulatory\\_compliance](http://www.dell.com/regulatory_compliance).
-  **CAUTION:** To avoid electrostatic discharge, ground yourself by using a wrist grounding strap or by periodically touching an unpainted metal surface (such as a connector on your computer).
-  **CAUTION:** Only a certified service technician should perform repairs on your computer. Damage due to servicing that is not authorized by Dell™ is not covered by your warranty.
-  **CAUTION:** To help prevent damage to the system board, remove the main battery (see [Removing the Battery](#)) before working inside the computer.

The system board's BIOS chip contains the Service Tag, which is also visible on a barcode label on the bottom of the computer. The replacement kit for the system board includes a CD that provides a utility for transferring the Service Tag to the replacement system board.

-  **CAUTION:** Handle components and cards by their edges, and avoid touching pins and contacts.
- 

## Removing the System Board

1. Follow the instructions in [Before You Begin](#).
2. Remove installed cards from the ExpressCard slot.
3. Remove the battery (see [Removing the Battery](#)).
4. Remove the module cover (see [Removing the Module Cover](#)).
5. Remove the memory modules (see [Removing the Memory Module\(s\)](#)).
6. Remove the Mini-Card (see [Removing the Mini-Card](#)).
7. Remove the coin-cell battery (see [Removing the Coin-Cell Battery](#)).
8. Remove the center control cover (see [Removing the Center Control Cover](#)).
9. Remove the keyboard (see [Removing the Keyboard](#)).
10. Remove the hard drive (see [Removing the Hard Drive](#)).
11. Remove the palm rest (see [Removing the Palm Rest](#)).
12. Remove the Bluetooth card (see [Removing the Bluetooth Card](#)).
13. Remove the speakers (see [Removing the Speakers](#)).
14. Remove the processor fan (see [Removing the Processor Fan](#)).
15. Disconnect the display cable and the camera cable from their respective system board connectors.



1	camera cable connector	2	display cable connector
---	------------------------	---	-------------------------

16. Remove the four screws that secure the system board to the computer base.
17. Lift the system board at an angle toward the side of the computer and out of the computer base.




1	system board
---	--------------

18. Turn the system board over.
19. Remove the processor heat sink assembly (see [Removing the Processor Heat Sink Assembly](#)).
20. Remove the processor (see [Removing the Processor](#)).


## Replacing the System Board

1. Replace the processor (see [Replacing the Processor](#)).
2. Replace the processor heat sink assembly (see [Replacing the Processor Heat Sink Assembly](#)).
3. Turn the system board over and place it on the computer base.
4. Replace the four screws that secure the system board to the computer base.
5. Connect the camera cable and the display cable to their respective connectors on the system board.
6. Replace the processor fan (see [Replacing the Processor Fan](#)).
7. Replace the speakers (see [Replacing the Speakers](#)).
8. Replace the Bluetooth card (see [Replacing the Bluetooth Card](#)).

9. Replace the palm rest (see [Replacing the Palm Rest](#)).
10. Replace the hard drive (see [Replacing the Hard Drive](#)).
11. Replace the keyboard (see [Replacing the Keyboard](#)).
12. Replace the center control cover (see [Replacing the Center Control Cover](#)).
13. Replace the coin-cell battery (see [Replacing the Coin-Cell Battery](#)).
14. Replace the Mini-Card (see [Replacing the Mini-Card](#)).
15. Replace the memory modules (see [Replacing the Memory Module\(s\)](#)).
16. Replace the module cover (see [Replacing the Module Cover](#)).
17. Replace the battery (see [Replacing the Battery](#)).
18. Replace any cards removed from the ExpressCard slot.

 **CAUTION:** Before turning on the computer, replace all screws and ensure that no stray screws remain inside the computer. Failure to do so may result in damage to the computer.

19. Turn on the computer.

 **NOTE:** After you have replaced the system board, enter the computer Service Tag into the BIOS of the replacement system board.

20. Enter the service tag (see [Entering the Service Tag in the BIOS](#)).

---

## Entering the Service Tag in the BIOS




1. Ensure that the AC adapter is plugged in and that the main battery is installed properly.
2. Turn on the computer.
3. Press <F2> during POST to enter the system setup program.
4. Navigate to the security tab and enter the service tag in the **Set Service Tag** field.

---

[Back to Contents Page](#)

[Back to Contents Page](#)

## Dell™ Inspiron™ 1320 Service Manual

-  **NOTE:** A NOTE indicates important information that helps you make better use of your computer.
-  **CAUTION:** A CAUTION indicates potential damage to hardware or loss of data if instructions are not followed.
-  **WARNING:** A WARNING indicates a potential for property damage, personal injury, or death.

Information in this document is subject to change without notice.  
© 2009 Dell Inc. All rights reserved.

Reproduction of these materials in any manner whatsoever without the written permission of Dell Inc. is strictly forbidden.

Trademarks used in this text: *Dell* and the *DELL* logo are trademarks of Dell Inc.; *Bluetooth* is a registered trademark owned by Bluetooth SIG, Inc. and is used by Dell under license; *Microsoft*, *Windows*, *Windows Vista*, and *Windows Vista* start button logo are either trademarks or registered trademarks of Microsoft Corporation in the United States and/or other countries.

Other trademarks and trade names may be used in this document to refer to either the entities claiming the marks and names or their products. Dell Inc. disclaims any proprietary interest in trademarks and trade names other than its own.

June 2009 Rev. A00

---

[Back to Contents Page](#)